



User Manual of MOBILUS C-AR external transmitter.

www.mobilus.pl

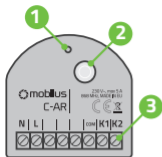
1. GENERAL INFORMATION

Transmitter **MOBILUS C-AR** module **MOBILUS** operating in **COSMO | 2WAY** system. Designed to control **MOBILUS** receivers: **ER, ERS, MR**, actuators, **MOBILUS C-MR** modules, based on the signals from the control panel control interface. The small dimensions of the module allow for placement in the wall box

2. IMPORTANT INFORMATIONS

- Read the instructions carefully before use.
- When unpacking the unit, make sure that there is no damage in the transport. If so, you should immediately inform the supplier.
- Read the operating manual carefully before use.
- **MOBILUS C-AR** module should be powered by 230 V ~, 50 Hz. Its installation should only be carried out by persons with electrical qualifications according to the enclosed electrical diagram in accordance with all applicable regulations.
- The appliance must be installed in place not accessible for children.
- **MOBILUS C-AR** transmitter is designed for cooperation with all **COSMO, COSMO | 2WAY** receivers.
- The range of the radio control is limited by regulations for maximum power of the remote control and the conditions of the installation of the equipment. When designing the location of the remote control, consider limiting the range to about 20m by 2 walls.
- Declaration of Conformity:
 - We declare under our sole responsibility that the **MOBILUS C-AR** complies with the following European Directives:
 1. 2014/53 / EU RED Radio Directive;
 2. 2014/30 / EU Electromagnetic Compatibility Directive.

3. PRODUCT DESCRIPTION



1. Antenna.
2. Illuminated PROGRAMMING BUTTON P.
3. Connection terminals:
 - N** - Neutral line;
 - L** - phase line;
 - COM** - central unit input;
 - K1** - central unit input - opening signal;
 - K2** - central unit input - closing signal;

4. TECHNICAL PARAMETERS

Power supply voltage: 230 V~; 50 Hz.

Radio protocol: COSMO, COSMO | 2WAY.

Frequency: 868 MHz.

Signal strength: up to 1 mW.

Range of operation: up to 40 m in open area, up to 20 m in building (depending on type of construction, materials used and units).

Installation location – concealed box $\varnothing \geq 50$ mm.

Working temperature: 0 °C – 40 °C.

Dimensions – 44 x 46 x 19 mm.

5. INSTALLATION OF THE DEVICE

1. Make sure that the mains voltage is disconnected.
2. Connect the **MOBILUS C-AR** module as shown - Fig. 5.
3. Place the **MOBILUS C-AR** module in the electrical box or near the control panel.
4. Properly align the antenna (as far away as possible from metal elements).
5. Turn on the mains voltage.

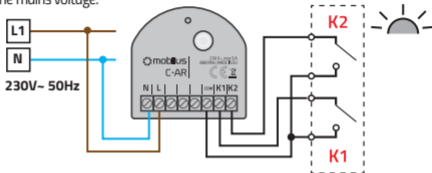


Fig. 5

6. LOADING THE MOBILUS C-AR MODULE INTO THE RADIO ACTUATOR

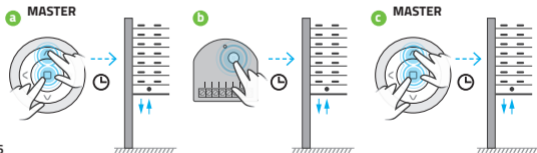


Fig. 6

1. Using a remote control **MASTER** enter the actuator to the programming mode. On the remote control, press and hold simultaneously the **STOP** and **UP** buttons until the drive of the actuator performs one sequence of micro movements down / up, confirming entry in the **PROGRAMMING MODE**. - Fig. 6a.

CONTINUED 6. LOADING THE MOBILUS C-AR MODULE INTO THE RADIO ACTUATOR

2. On the **MOBILUS C-AR** module briefly press the programming button - the actuator will execute one sequence of micro moves down / up. - Fig. 6b.
3. If within 20 sec. no programming will occur, the actuator will automatically return to the OPERATION MODE. You can accelerate to the OPERATION MODE by hand using the **MASTER** control. In this case, press the **STOP** and **UP** buttons on the remote control and hold it for more than 5 seconds. In both cases, the return to the WORK MODE will be confirmed by a sequence of micro moves down / up of the drive. - Fig. 6c.

7. CHANGING THE WORKING MODE OF THE MOBILUS C-AR TRANSMITTER

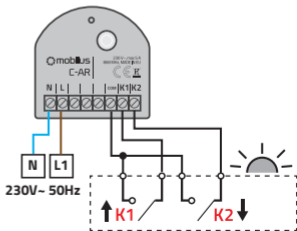
In order to change the OPERATION MODE of the MOBILUS C-AR transmitter, press and hold the PROGRAMMING BUTTON for at least 5 seconds. (no more than 9 sec.) The sound signal will be signaled on the mode switching: 1 signal - I MODE, 2 signals - II MODE. Switching takes place alternately.

8. I MOBILUS C-AR TRANSMITTER OPERATING MODE

I MODE - Function of module using control connectors **K1**, **COM**, **K2**.

If **K1** and **COM** are shorted, the **UP** command is sent to the receiver.

If **K2** and **COM** are shorted, the **DOWN** command is sent to the receiver.



9. II MOBILUS C-AR TRANSMITTER OPERATING MODE

1. MODE II - Operating of module using control connectors K1, COM.

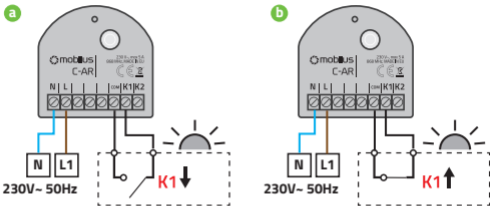


Fig. 9.1

Opening the K1 and COM connectors sends the **DOWN** command to the receiver - Fig. 9.1a.
Shorting of the K1 and COM connectors sends the **UP** command to the receiver - Fig. 9.1b.

2. MODE II - Operating of module using control connectors K2, COM.

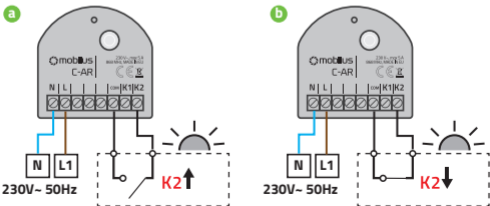


Fig. 9.2

CONTINUED 9. II MOBILUS C-AR TRANSMITTER OPERATING MODE

Opening the **K2** and **COM** connectors sends the **UP** command to the receiver - Fig. 9.2a.
Shorting of the **K2** and **COM** connectors sends the **DOWN** command to the receiver - Fig. 9.2b.

10. CHANGE OF COSMO - COSMO 2WAY COMMUNICATION MODE

Transmitter **MOBILUS C-AR** works in the latest version of the radio communication **COSMO | 2WAY**. If you need to change the mode to an older version (eg if you buy a module for older types of radio actuators with **COSMO** communication) Please follow the instructions below:

1. Press and hold the programming key P - Fig. 10 for about 10 seconds.
2. LED illumination and sound length indicate activation of appropriate communication standard:
 - a) 5x short LED flash and short beeps - latest **COSMO | 2WAY** communication;
 - b) 5x long LED flash and long beeps - current **COSMO** communication;



Fig.10

ENVIRONMENTAL PROTECTION



This appliance is marked according to the European Directive on Waste Electrical and Electronic Equipment (2002/96/EC) and further amendments. By ensuring this product is disposed of correctly, you will help to prevent potential negative consequences for the environment and human health, which could otherwise be caused by inappropriate waste handling of this product. The symbol on the product, or the documents accompanying the product, indicates that this appliance may not be treated as household waste. It shall be handed over to the applicable collection point for the waste electrical and electronic equipment for recycling purpose. For more information about recycling of this product, please contact your local authorities, your household waste disposal service or the shop where you purchased the product.



MOBILUS MOTOR Spółka z o.o.

ul. Miętowa 37, 61-680 Poznań, PL

tel. +48 61 825 81 11, fax +48 61 825 80 52

VAT NO. PL9721078008

Wersja 1.1ENG, 190228

www.mobilus.pl